



**SEARLE'S**  
RV CENTRE

**AUSTRACK**  
CAMPERS®  
& OFFROAD HYBRID CARAVANS  
BUILT TOUGH. BUILT TO LAST

# MADIGAN 16

HYBRID CAMPER



**\$5,485** BONUS UPGRADES!



THE POWER OF  
**REDARC**

**PEDDERS**

**TIMKEN**

**ONLY \$75,990**

\*plus dealer delivery

FINANCE FROM \$280 p/w\*\*  
(07) 5437 6988



\*\*Conditions, fees and charges apply. Rate subject to change without notice. \*Comparison rate calculated on a loan amount of \$50,000 secured over a term of 7 years based on weekly repayments. WARNING: This comparison rate applies only to examples given. Different amounts and terms will result in different comparison rates. Costs such as redraw or early repayment fees and cost savings such as fee waivers are not included in the comparison rate, but may influence the cost of the loan. Finance is subject to lenders lending criteria. Assistance provided by Austrack Finance Australian Credit Licence 422959.

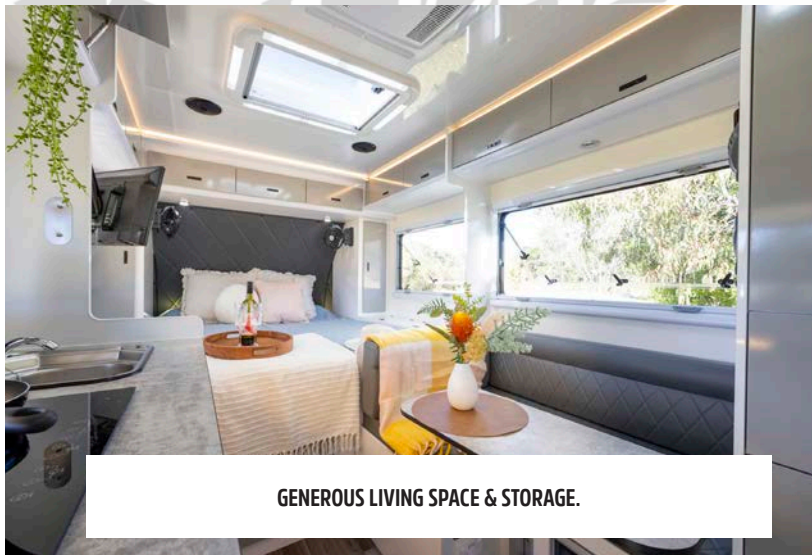
**LIFETIME WARRANTY ON CHASSIS & DRAWBAR.**

- ✓ 400 WATTS ROOF MOUNTED SOLAR
- ✓ 2 X 100AH LITHIUM BATTERIES
- ✓ AIR CONDITIONING
- ✓ DUAL INDUCTION COOKTOP
- ✓ ANTI FLAP KIT INCLUDED
- ✓ INTERNAL FRIDGE

# MADIGAN 16

## INCLUDED AS STANDARD

- ✓ Roof Mounted Air Conditioner
- ✓ **REDARC** 2kW Pure Sinewave Inverter with 240v Auto Changeover
- ✓ **REDARC** Manager30 Complete Battery Management & Charging System
- ✓ **PEDDERS** Foam Cell Big Bore 4x4 Shock Absorbers
- ✓ AusTuff Off-road Suspension System
- ✓ 2 x 100Ah LiFePO4 Lithium Batteries
- ✓ 400 Watt Roof Mounted Solar Panels
- ✓ Bluetooth Stereo System
- ✓ Internal Fridge
- ✓ SMART TV with External & Internal Mounts
- ✓ Inline Gas Plumbing with 2nd Outlet (Fully Certified)
- ✓ Truma Ultrarapid 14L Gas/Electric Hot Water System
- ✓ Mains Water Connections
- ✓ McHitch 3.5T Full Off-road Coupling
- ✓ Separate Internal Shower & Toilet
- ✓ Single Spare Wheel
- ✓ Luxury Queen Size Inner Pocket Spring Bed
- ✓ Double-glazed Windows
- ✓ LED Lights & Reading Lights
- ✓ External Shower & Ensuite Tent
- ✓ 2 x 120L Fresh Water Tanks
- ✓ 80L Grey Water Tank
- ✓ External Storage & Generator Box
- ✓ Pole Storage
- ✓ Electric Waterproof Awning
- ✓ Full Security Mesh Front Door
- ✓ Fully Enclosed Front Aluminium Storage Box
- ✓ Internal Sink & Induction Stovetop
- ✓ External Pull-out Kitchen
- ✓ Extra Storage Pantry on Fridge Slide
- ✓ Bug Repellent & Interchangeable Lights
- ✓ Carpeted Pantry Areas Above Kitchen
- ✓ Rock Sliders



GENEROUS LIVING SPACE & STORAGE.



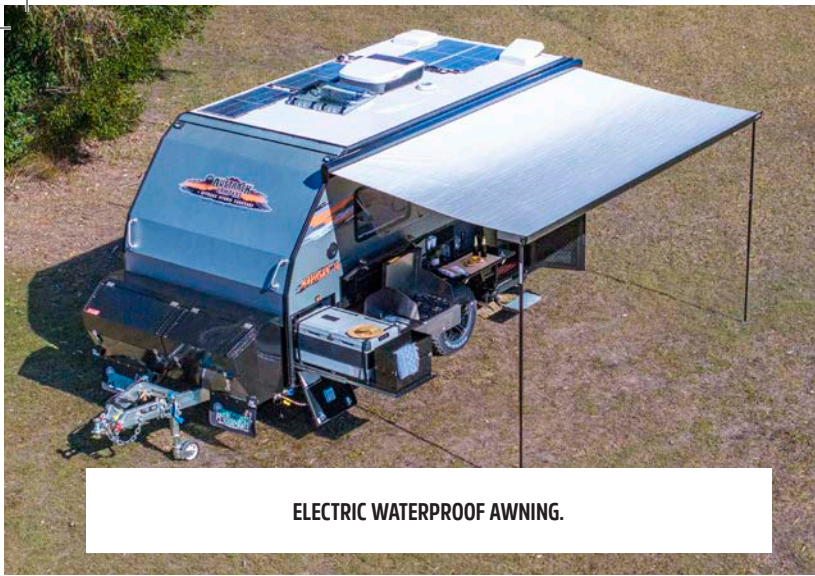
FRIDGE SLIDE, 955 (L) X 540 (W) X 520 (H) MM WITH EXTRA PANTRY STORAGE. OPTIONAL LARGE EXTERNAL FRIDGE/FREEZER AVAILABLE.



WATER STORAGE: 2 X 120L FOODGRADE POLY WATER TANKS. 12.5L PER MIN 12V ELECTRIC PUMP. WATER TANK GUARDS, WATER GAUGE.



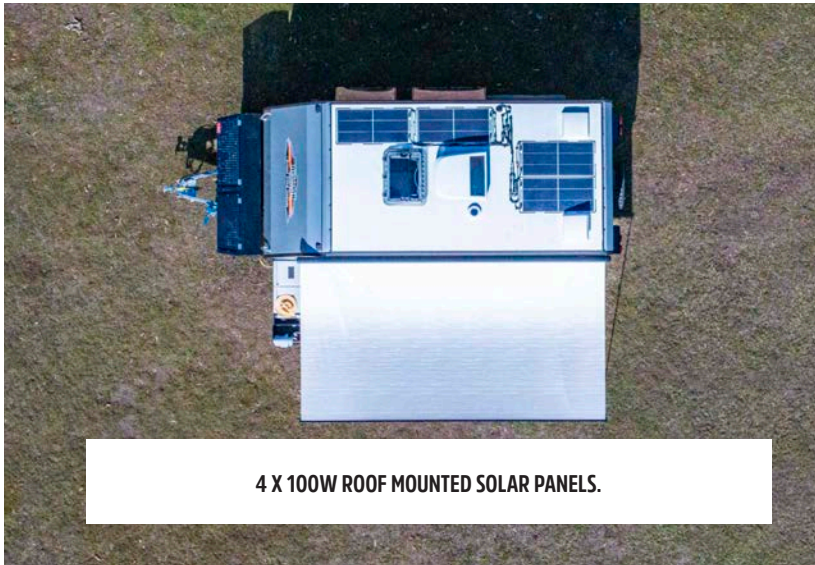
PULL OUT STAINLESS STEEL KITCHEN WITH CUTLERY DRAWER. LARGE SINK & MULTI-BURNER STOVE WITH WIND BREAK.



**ELECTRIC WATERPROOF AWNING.**



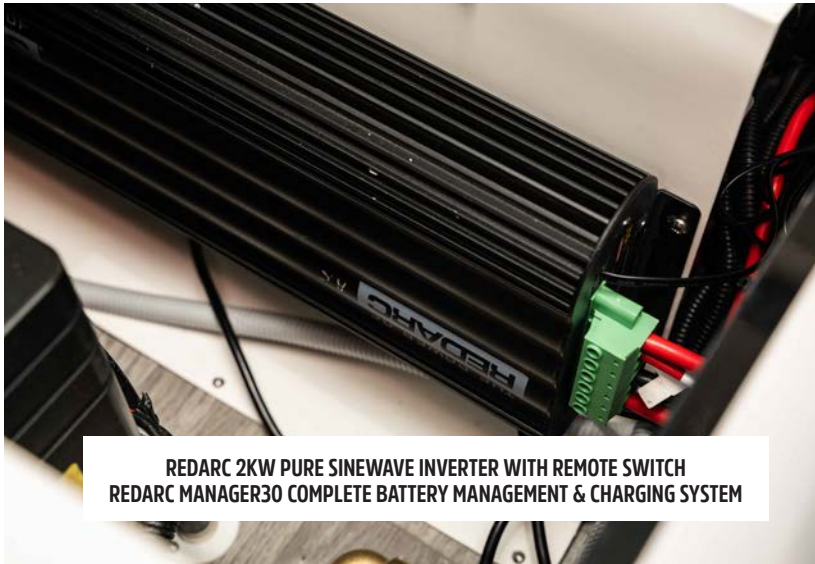
**BAR AREA WITH CUTTING BOARD & ADDITIONAL STORAGE SPACE.**



**4 X 100W ROOF MOUNTED SOLAR PANELS.**



**FULL INTERNAL BATHROOM WITH ELECTRIC FLUSHING TOILET. MIRROR & ADJUSTABLE SHOWER ROSE & SHOWER CURTAIN.**



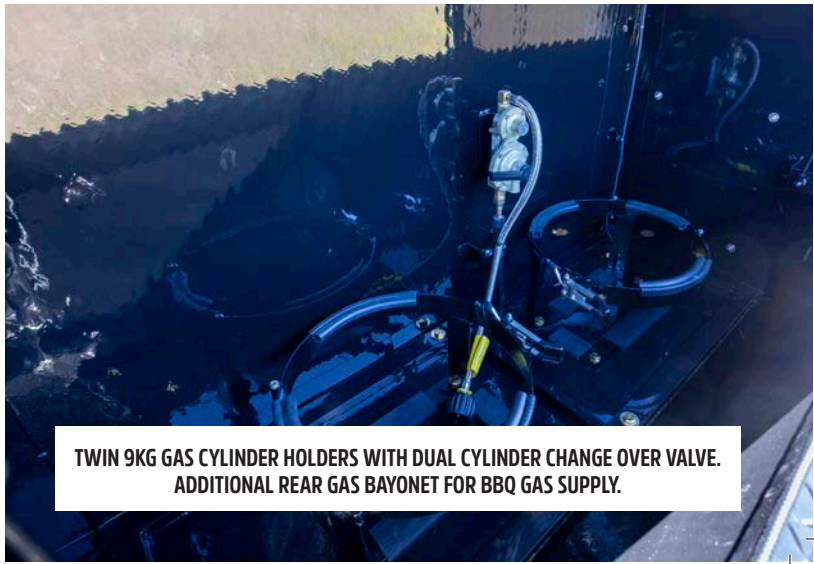
**REDARC 2KW PURE SINEWAVE INVERTER WITH REMOTE SWITCH  
REDARC MANAGER30 COMPLETE BATTERY MANAGEMENT & CHARGING SYSTEM**



**CONTROL PANEL WITH WATER GAUGES & BLUETOOTH STEREO SYSTEM.**



**MCHITCH 3.5T FULL OFF-ROAD COUPLING. DOUBLE ADR APPROVED RATED SAFETY CHAINS. ARK X0 750 SERIES EXTRA HEAVY DUTY DUAL WHEEL JOCKEY WHEEL.**



**TWIN 9KG GAS CYLINDER HOLDERS WITH DUAL CYLINDER CHANGE OVER VALVE. ADDITIONAL REAR GAS BAYONET FOR BBQ GAS SUPPLY.**

# MADIGAN 16

## SPECIFICATIONS

**Construction** • Fully Welded aluminium wall frame, aluminium composite panelling, Hot dipped galvanised Chassis & Drawbar.

**Roof Construction** • Reinforced aluminium composite with aluminium frame.

**Hitch** • McHitch 3.5T Full Off-road Coupling, ADR approved & rated safety chains. Dual rear recovery points. Ark XO 750 Series extra heavy duty fully adjustable dual wheel jockey wheel.

**Brakes** • 6 stud 4x4 hubs, heavy duty bearings and 12 inch heavy duty electric brakes with mechanical handbrake. Trailer breakaway system.

**Suspension** • Adjustable independent coil spring AusTuff Off-road Suspension with Pedders foam cell big bore 4x4 shock absorbers.

**Gas & Fuel** • 2 x 9kg or 4.5kg Gas holders. 2 x 20L Jerry Can Holders.

**Wheels & Tyres** • 3 x Brand New Reinforced Black alloy mag wheels. 3 x Brand New M/T (Mud Terrain), Tyre Size : 265/75-R16. 4 x Heavy Duty Lockable and Adjustable Drop-Down stabiliser legs. Single spare tyre holder. 4 x Embossed Mudflaps.

**Electrical Connection** • 1 x 7 pin flat or round plug. 1 x 50Amp Anderson plug. External 240V inlet, 240V outlet.

**Electrical System** • 2 x 100Ah LiFePO4 lithium batteries. 4 x 100W roof mounted solar panels, REDARC 2kW Pure Sinewave inverter with 240v auto changeover REDARC Manager30 with built in 30amp AC charger, 30amp DC/DC charger with power supply mode. Includes full battery management system. Internal and external 240V outlets. Multiple USB and accessory outlets. LED Tail lights/LED tent lights/Indicators/Number plate lights.

**Lighting** • External LED body lights, Multiple internal LED lights & 2 LED reading lights. LED Stair light handle.

**Gas Lines** • Completely plumbed from gas bottles to kitchen with dual bottle change over valve and gas certification certificate. Additional bayonet gas connection at rear of camper for a BBQ gas supply.

**Water Storage** • 2 x 120L Foodgrade poly water tanks & 1 x 80L plumbed grey water tank and system. 12.5L per min 12V Electric Pump. Water tank guards, water gauge.

**Storage** • Multiple Storage Boxes with Drawers and plenty of open space. High Quality pinch-weld automotive seals & adjustable compression locks.

**Windows & Doors** • Double glazed quality tinted glass door with mosquito & security mesh. Windows include anti-mosquito mesh and shade curtain.

**Internal Features** • Timber look Vinyl flooring. Plush faux leather seating. Under seat storage. Dining table. Upright wardrobe and drawer storage. Multiple internal Side pockets for extra storage.

**Dining** • Adjustable table with Internal Seating.

**Mattress** • Plush 150mm Custom Queen foldable inner pocket spring mattress.

**Shower** • Truma Water ultra rapid Gas/electric water heater. Full internal bathroom with electric flushing toilet (external removable cassette), vanity sink with mirror & fully adjustable shower rose & shower curtain. External hot/cold RV Side Mounted Shower Tent.

**Kitchen** • Pull Out Stainless steel Kitchen with cutlery drawer, utility drawers, electric pump, cold tap, large sink & AGA approved multi burner stove. Large pull out kitchen preparation bench. Multiple storage compartments. Internal double induction cooktop.

Bonus inclusions:

Roof Mounted Air conditioner

Multiple gas outlets to allow for kitchen plumbing & also a spare for a BBQ.

Electric PVC waterproof awning

Bluetooth Stereo. Internal + External Speakers.

Internal fridge.

SMART TV with internal external positioning mounts

Antiflap kit included.

**Closed Measurements** • 7100L x 2460W x 3090H (including aircon)

**Payload** • Approx. 785kg

**Tare weight** • Approx. 2215kg

**Registered** • 3000kg

**Ball Weight** • Approx. 205kg

**VIN plate** • All ready for registration

External fridge (28kg), Antiflap kit (35kg) do not make up part of tare weight.



**SEARLE'S**  
RV CENTRE

23 Phoebe Crescent,  
Kensington (Bundaberg)  
QLD 4670

**07 4151 3000**  
www.searlesrvcentre.com.au  
Mon-Fri 8am - 5pm, Sat 8am - 12pm